

Quality Assurance Keep Improving



TECHNOMET ENTERPRISES



Mail:

maresh.bhattad@technometent.co.in
tme_pne@technometent.co.in
salestechnomet123@gmail.com

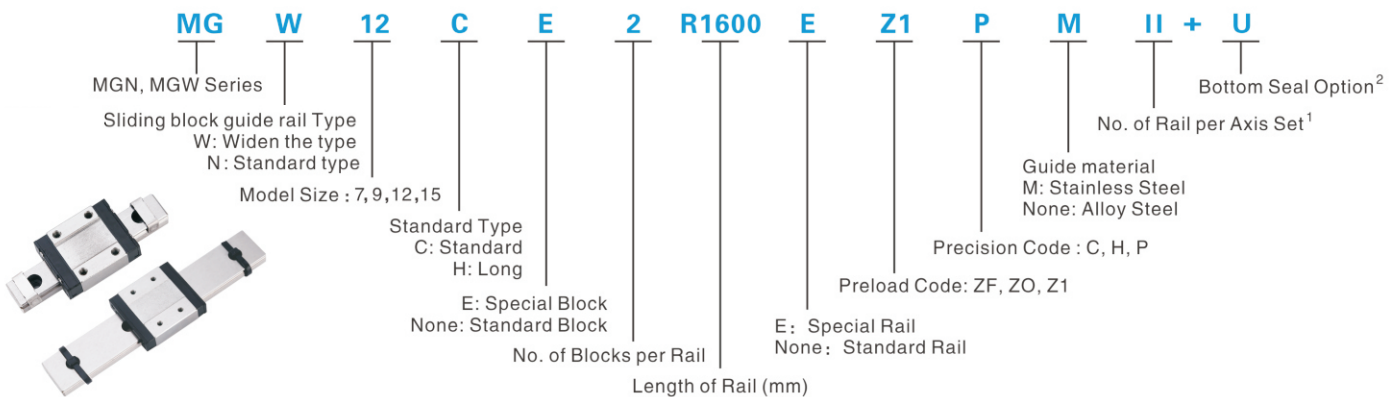
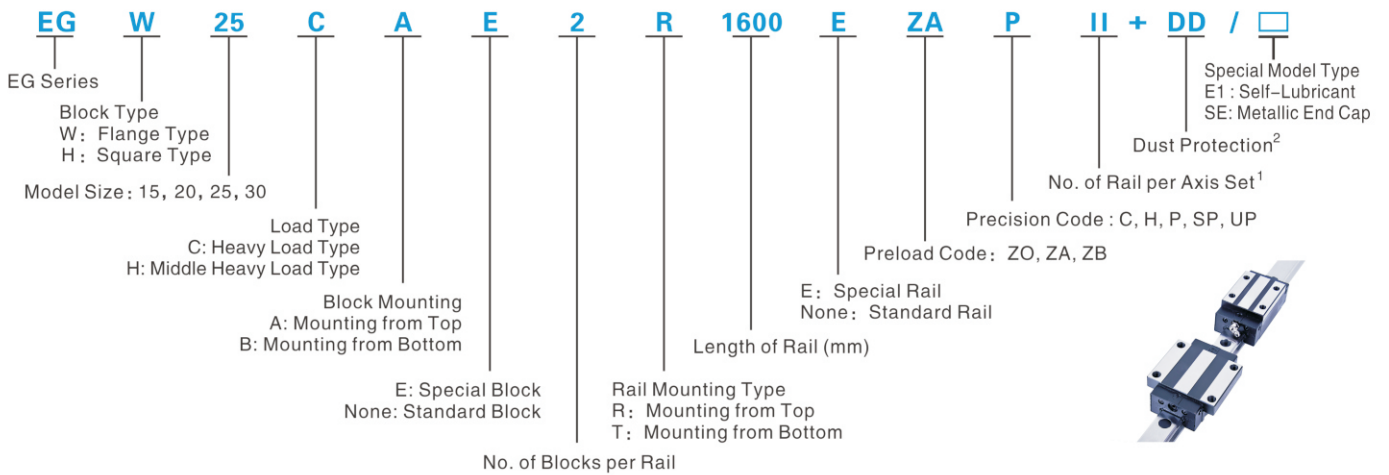
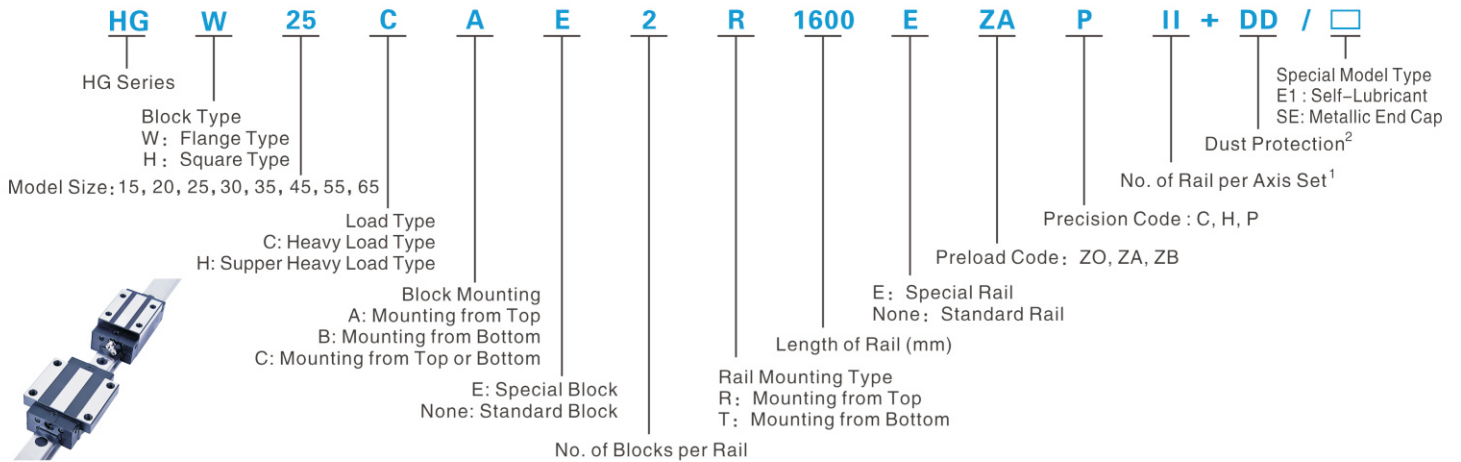


Contact No.:

+91-98500 87426
+91-98500 83743
+91-72760 91255

Address: 103, Varad Vinayak Complex, Sr.no. 26/1, Narhe, PUNE, 411041

www.technometent.co.in

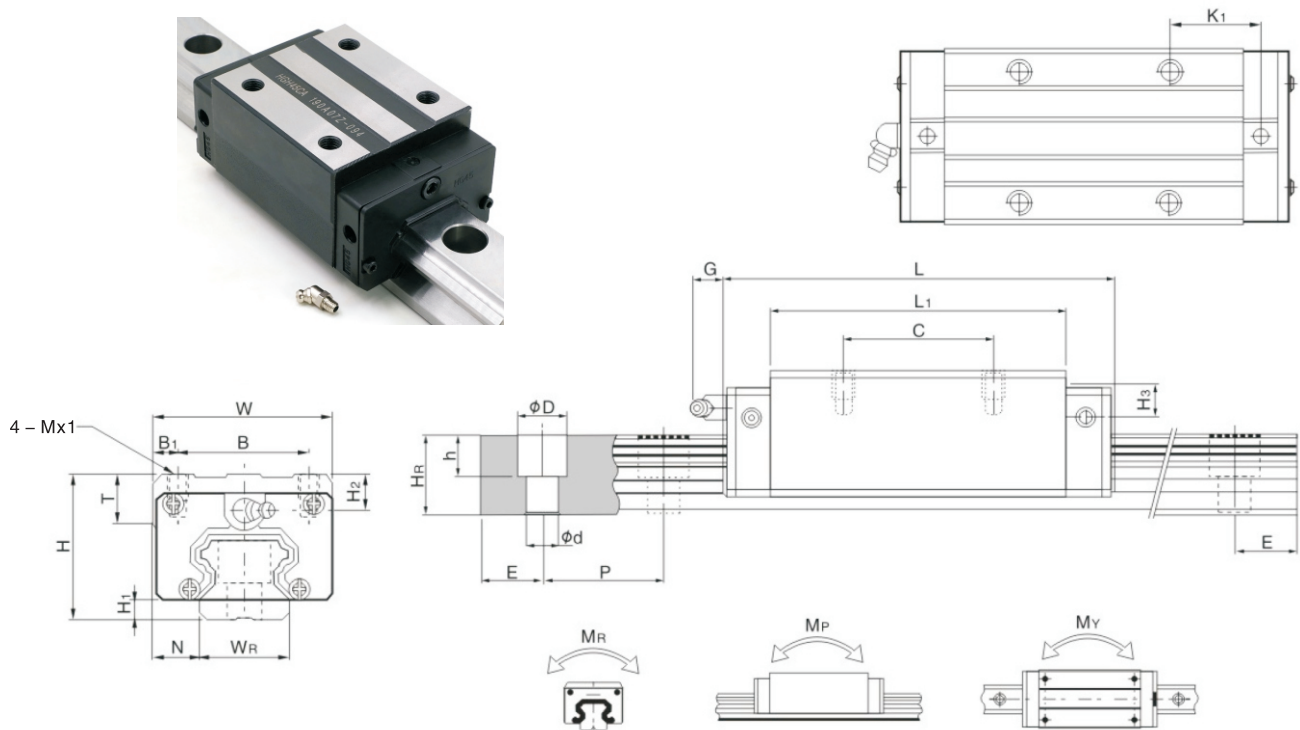


- Note: 1. The roman numerals are used to express the number of matched rails used in one axis. When a single rail is used in an axis, no symbol is indicated.
2. No symbol indicateds standard protection(end seals and bottom seal).
- ZZ : End seals, bottom seal and scraper
 - KK : Double seals, bottoms seal and scraper
 - DD: Double seals and bottoms seal
 - U: The bottom seal is available for MGN & MGW 12, 15.

HGH Series Linear Guideway

Dimensions of HGH Series Linear Guideway (High Load Square Type)

HGH-CA/HGH-HA

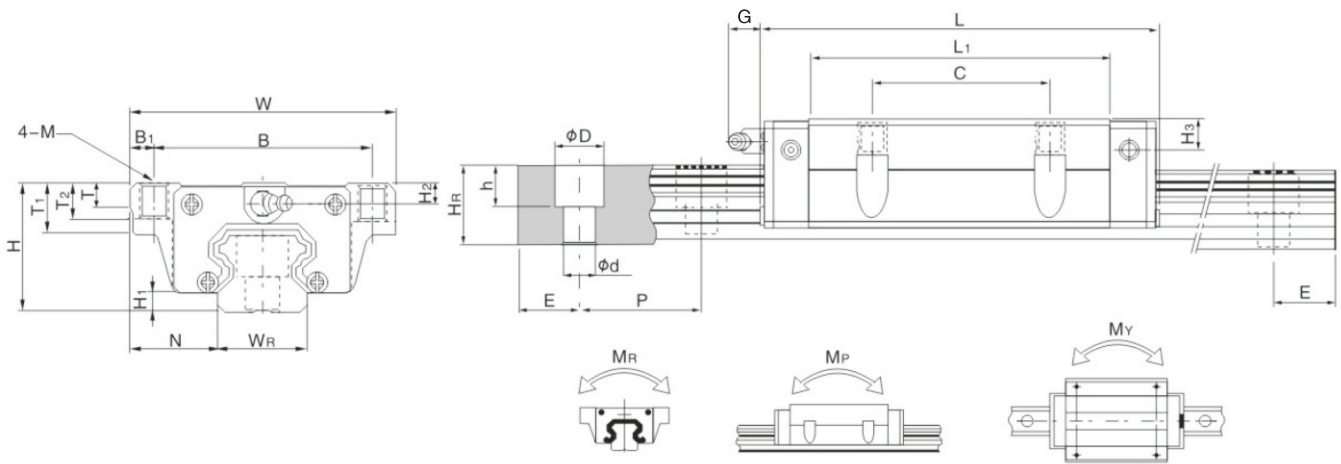
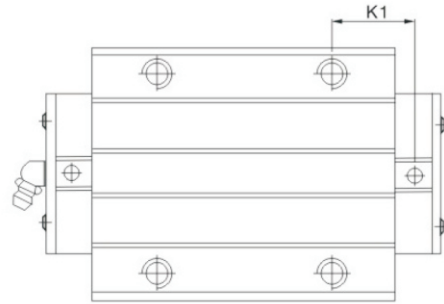
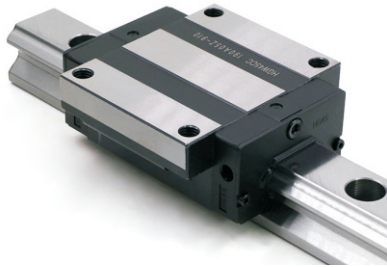


Model No.	Dimensions Of Assembly (mm)			Dimensions of Block (mm)										Dimensions of Rail (mm)					Mounting Bolt for rail (mm)	Basic Dynamic Load Rating C (kN)	Basic Static Load Rating Co (kN)	Static Rated Moment			Weight					
	H	H1	N	W	B	B1	C	L1	L	K1	G	Mx1	T	H2	H3	Wr	Hr	D				h	d	P	E	MR kN-m	MP kN-m	MY kN-m	Block kg	Rail kg/m
HGH15CA	28	4.3	9.5	34	26	4	26	39.4	61.4	10	5.3	M4x5	6	8	7.7	15	15	7.5	5.3	4.5	60	20	M4x16	11.38	25.31	0.17	0.15	0.15	0.18	1.45
HGH20CA	30	4.6	12	44	32	6	36	50.5	77.5	12	12	M5x6	8	6	7	20	18	9.5	8.5	6	60	20	M5x16	17.75	37.84	0.38	0.27	0.27	0.3	2.21
HGH20HA							50	65.2	92.2	13														21.18	48.84	0.48	0.47	0.47	0.39	
HGH25CA	40	5.5	13	48	35	6.5	35	58	84	17	12	M6x8	8	10	13	23	22	11	9	7	60	20	M6x20	26.48	56.19	0.64	0.51	0.51	0.51	3.21
HGH25HA							50	78.6	104.6	20														32.75	76	0.87	0.88	0.88	0.69	
HGH30CA	45	6	16	60	40	10	40	70	97.4	20	12	M8x10	8.5	9.5	14	28	26	14	12	9	80	20	M8x25	38.74	83.06	1.06	0.85	0.85	0.88	4.47
HGH30HA							60	93	120.4	22														47.27	110.13	1.4	1.47	1.47	1.16	
HGH35CA	55	7.5	18	70	50	10	50	80	112.4	21	12	M8x12	10	16	20	34	29	14	12	9	80	20	M8x25	49.52	102.87	1.73	1.2	1.2	1.45	6.3
HGH35HA							72	106	138.2	23														60.21	136.31	2.29	2.08	2.08	1.92	
HGH45CA	70	9.5	21	86	60	13	60	97	139.4	23	13	M10x17	16	19	31	45	38	20	17	14	105	23	M12x35	77.57	155.93	3.01	2.35	2.35	2.73	10.41
HGH45HA							80	128.8	171.2	29														94.54	207.12	4	4.07	4.07	3.61	
HGH55CA	80	13	24	100	75	13	75	118	166.7	27	13	M12x18	18	22	29	53	44	23	20	16	120	30	M14x45	114.44	227.81	5.66	4.06	4.06	4.17	15.08
HGH55HA							95	156	204.8	36														139.35	301.26	7.49	7.01	7.01	5.49	
HGH65CA	90	15	32	126	76	25	70	144	200.2	43	13	M16x20	25	15	15	63	53	26	22	18	150	35	M16x50	163.63	324.71	10.02	6.44	6.44	7	21.18
HGH65HA							120	204	259.6	48														208.36	457.15	14.15	11.1	11.1	9.82	

HGW Series Linear Guideway

Dimensions of HGH Series Linear Guideway (High Load Square Type)

HGW-CC/HGW-HC



Model No.	Dimensions Of Assembly (mm)			Dimensions of Block (mm)															Dimensions of Rail (mm)						Mounting Bolt For rail (mm)	Basic Dynamic Load Rating C (kN)	Basic Static Load Rating Co (kN)	Static Rated Moment			Weight	
	H	H1	N	W	B	B1	C	L1	L	K1	G	M	T	T1	T2	H2	H3	Wr	Hr	D	h	d	P	E				Mr	Mp	My	Block	Rail
	mm	mm	mm	mm	mm	mm	mm	mm	mm	mm	mm	mm	mm	mm	mm	mm	mm	mm	mm	mm	mm	mm	mm	mm				mm	kN-m	kN-m	kN-m	kg
HGW150C	24	4.3	16	47	38	4.5	30	39.4	61.4	8	5.3	M5	6	8.9	6.95	3.95	3.7	15	15	7.5	5.3	4.5	60	20	M4x16	11.38	25.31	0.17	0.15	0.15	0.17	1.45
HGW200C	30	4.6	21.5	63	53	5	40	50.5	77.5	10.25	12	M6	8	10	9.5	6	7	20	17.5	9.5	8.5	6	60	20	M5x16	17.75	37.84	0.38	0.27	0.27	0.4	2.21
HGW20HC								65.2	92.2	17.6																21.18	48.84	0.48	0.47	0.47	0.52	
HGW250C	36	5.5	23.5	70	57	6.5	45	58	84	11.8	12	M8	8	14	10	6	9	23	22	11	9	7	60	20	M6x20	26.78	56.19	0.64	0.51	0.51	0.59	3.21
HGW25HC								70.6	104.6	22.1																32.75	76	0.87	0.88	0.88	0.8	
HGW300C	42	6	31	90	72	9	52	70	97.4	14.25	12	M10	8.5	16	10	6.5	10.8	28	26	14	12	9	80	20	M8x25	38.74	83.06	1.06	0.85	0.85	1.09	4.47
HGW30HC								93	120.4	25.75																47.27	110.13	1.4	1.47	1.47	1.44	
HGW350C	48	7.5	33	100	82	9	62	80	112.4	14.6	12	M10	10.1	18	13	9	12.6	34	29	14	12	9	80	20	M8x25	49.52	102.87	1.73	1.2	1.2	1.56	6.3
HGW35HC								105.8	138.2	27.5																60.21	136.31	2.29	2.08	2.08	2.06	
HGW450C	60	9.5	37.5	120	100	10	80	97	139.4	13	12.9	M12	15.1	22	15	8.5	20.5	45	38	20	17	14	105	22.5	M12x35	77.57	155.93	3.01	2.35	2.35	2.79	10.41
HGW45HC								128.8	171.2	28.9																94.547	207.12	4	4.07	4.07	3.69	
HGW550C	70	13	43.5	140	116	12	95	117.7	166.7	17.35	12.9	M14	17.5	26.5	17	12	19	53	44	23	20	16	120	30	M14x45	114.44	227.81	5.66	4.06	4.06	4.52	15.08
HGW55HC								158.8	204.8	36.4																139.35	301.26	7.49	7.01	7.01	5.96	
HGW650C	90	15	53.5	170	142	14	110	144.2	200.2	23.1	12.9	M16	25	37.5	23	15	15	63	53	26	22	18	150	35	M16x60	163.63	324.71	10.02	6.44	6.44	9.17	21.18
HGW65HC								203.6	259.6	52.8																208.36	457.15	14.15	11.12	11.12	12.89	

Note: 1kgf=9.81N