



Quality Assurance Keep Improving



TECHNOMET ENTERPRISES



Mail:

mahesh.bhattad@technometent.co.in
tme_pne@technometent.co.in
salestechnomet123@gmail.com



Contact No.:

+91-98500 87426
+91-98500 83743
+91-72760 91255

Address: 103, Varad Vinayak Complex, Sr.no. 26/1, Narhe, PUNE, 411041

www.technometent.co.in

LMH...UU/LMSH...UU



LMH

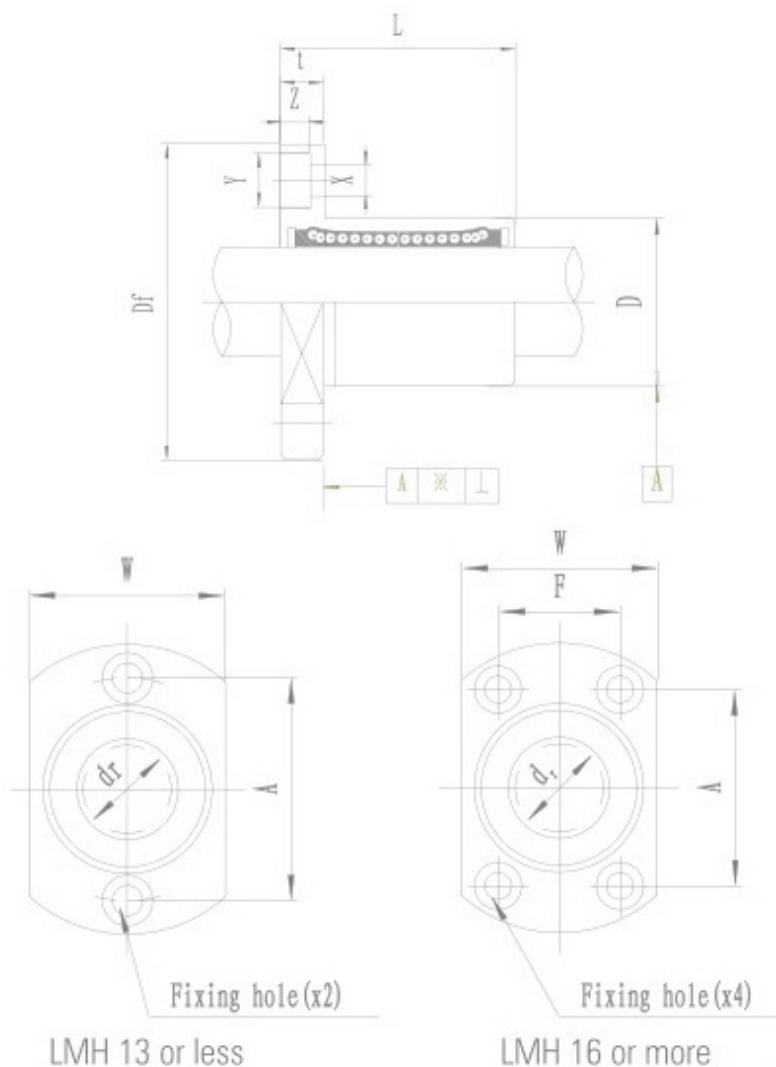


LMSH

This type is a metric dimension series widely used in Japan and other countries.

Nominal Shaft Diameter (mm)	Model No.		Weight (g)	Major Dimensions and Tolerance						
	Bearing Steel Type	Stainless Steel Type		dr		D		D _f	L	
	LMH...UU	LMSH...UU		mm	Tolerance (μm)	mm	Tolerance (μm)	mm	mm	Tolerance (μm)
6	LMH6-UU	LMSH6-UU	21	6	0-9	12	0-13	28	19	±300
8	LMH8-UU	LMSH8-UU	33	8	0-9	15	0-13	32	24	±300
10	LMH10-UU	LMSH10-UU	64	10	0-9	19	0-16	40	29	±300
12	LMH12-UU	LMSH12-UU	68	12	0-9	21	0-16	42	30	±300
13	LMH13-UU	LMSH13-UU	81	13	0-9	23	0-16	43	32	±300
16	LMH16-UU	LMSH16-UU	112	16	0-9	28	0-16	48	37	±300
20	LMH20-UU	LMSH20-UU	167	20	0-10	32	0-19	54	42	±300
25	LMH25-UU	LMSH25-UU	325	25	0-10	40	0-19	62	59	±300
30	LMH30-UU	LMSH30-UU	388	30	0-10	45	0-19	74	64	±300

Note: All sizes of LMH (LMSH) type are sealed on both sides.



Model No.		Major Dimensions and Tolerance							Eccentricity (μm)	Squareness (μm)	Basic Load Rating		Nominal Shaft Diameter (mm)
Bearing Steel Type	Stainless Steel	Flange									Dynamic (CN)	Static (CoN)	
LMH...UU	LMSH...UU	W mm	t mm	A mm	F mm	X mm	Y mm	Z mm					
LMH6-UU	LMSH6-UU	18	5	20	-	3.5	6	3.1	12	12	206	265	6
LMH8-UU	LMSH8-UU	21	5	24	-	3.5	6	3.1	12	12	274	392	8
LMH10-UU	LMSH10-UU	25	6	29	-	4.5	7.5	4.1	12	12	372	549	10
LMH12-UU	LMSH12-UU	27	6	32	-	4.5	7.5	4.1	12	12	510	784	12
LMH13-UU	LMSH13-UU	29	6	33	-	4.5	7.5	4.1	12	12	510	784	13
LMH16-UU	LMSH16-UU	34	6	31	22	4.5	7.5	4.1	12	12	774	1180	16
LMH20-UU	LMSH20-UU	38	8	36	24	5.5	9	5.1	15	15	882	1370	20
LMH25-UU	LMSH25-UU	46	8	40	32	5.5	9	5.1	15	15	980	1570	25
LMH30-UU	LMSH30-UU	51	10	49	35	6.6	11	6.1	15	15	1570	2740	30

LMH..LUU/LMSH..LUU



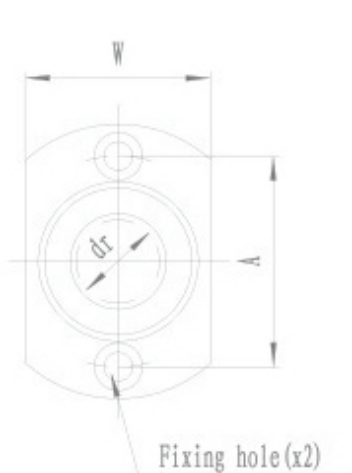
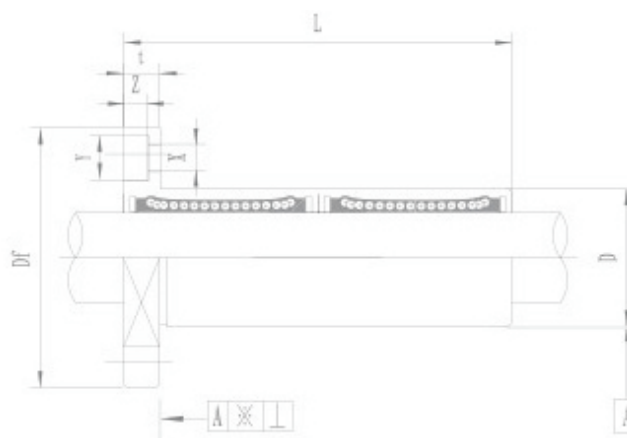
LMH-L



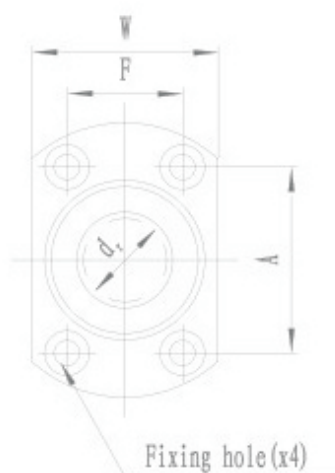
LMSH-L

Nominal Shaft Diameter (mm)	Model No.		Weight (g)	Major Dimensions and Tolerance						
	Bearing Steel Type	Stainless Steel Type		dr		D		D _f	L	
				mm	Tolerance (μm)	mm	Tolerance (μm)		mm	Tolerance (μm)
6	LMH6L-LUU	LMSH6L-LUU	28	6	0-10	12	0-13	28	35	±300
8	LMH8L-LUU	LMSH8L-LUU	47	8	0-10	15	0-13	32	45	±300
10	LMH10L-LUU	LMSH10L-LUU	90	10	0-10	19	0-16	40	55	±300
12	LMH12L-LUU	LMSH12L-LUU	102	12	0-10	21	0-16	42	57	±300
13	LMH13L-LUU	LMSH13L-LUU	123	13	0-10	23	0-16	43	61	±300
16	LMH16L-LUU	LMSH16L-LUU	182	16	0-10	28	0-16	48	70	±300
20	LMH20L-LUU	LMSH20L-LUU	247	20	0-12	32	0-19	54	80	±300
25	LMH25L-LUU	LMSH25L-LUU	525	25	0-12	40	0-19	62	112	±300
30	LMH30L-LUU	LMSH30L-LUU	645	30	0-12	45	0-19	74	125	±300

Note: All sizes of LMH type are sealed on both sides.



LMH 13 or less



LMH 16 or more

Model No.		Major Dimensions and Tolerance							Eccentricity (μm)	Squareness (μm)	Basic Load Rating		Nominal Shaft Diameter (mm)
Bearing Steel Type	Stainless Steel Type	Flange									Dynamic (CN)	Static (CoN)	
LMH...LUU	LMSH...UU	W mm	t mm	A mm	F mm	X mm	Y mm	Z mm					
LMH6L-UU	LMSH6L-UU	18	5	20	-	3.5	6	3.1	15	15	323	529	6
LMH8L-UU	LMSH8L-UU	21	5	24	-	3.5	6	3.1	15	15	431	784	8
LMH10L-UU	LMSH10L-UU	25	6	29	-	4.5	7.5	4.1	15	15	588	1100	10
LMH12L-UU	LMSH12L-UU	27	6	32	-	4.5	7.5	4.1	15	15	813	1570	12
LMH13L-UU	LMSH13L-UU	29	6	33	-	4.5	7.5	4.1	15	15	813	1570	13
LMH16L-UU	LMSH16L-UU	34	6	31	22	4.5	7.5	4.1	15	15	1230	2350	16
LMH20L-UU	LMSH20L-UU	38	8	36	24	5.5	9	5.1	20	20	1400	2740	20
LMH25L-UU	LMSH25L-UU	46	8	40	32	5.5	9	5.1	20	20	1560	3140	25
LMH30L-UU	LMSH30L-UU	51	10	49	35	6.6	11	6.1	20	20	2490	5490	30